

**1/174 Smeaton Grange Road SMEATON GRANGE NSW**

This great office offers the following below:

- Large reception area
- Main office suite
- Board room
- Main work hub
- Two additional office suites
- Amenities with disabled access and shower
- Large kitchen/staff lunch room

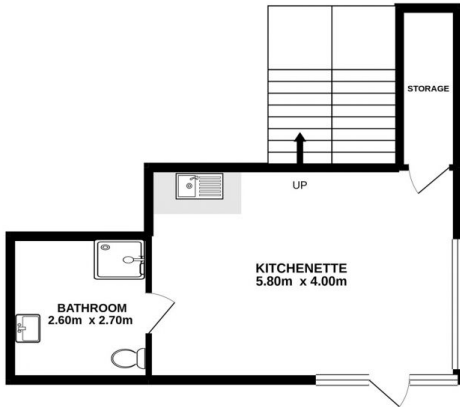
For more information, please contact Glen Alchin on 0417 045 761 or email [glen@macarthurunited.com.au](mailto:glen@macarthurunited.com.au)

**Type** : Offices  
**Price** : \$50,000 + GST  
**Building Size** : 200 sqm  
**View** : <https://www.macarthurunited.com.au/7955816>

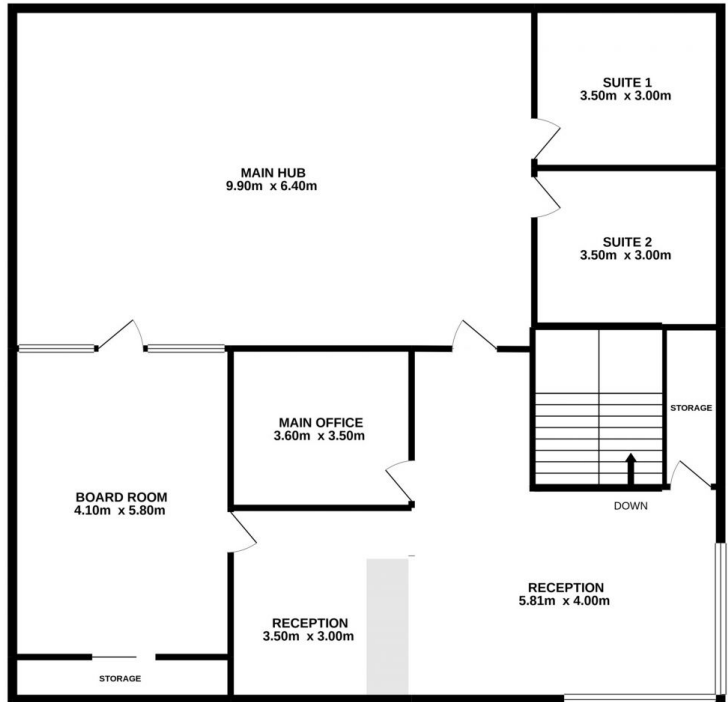


**Ryan Shumack**  
0426 984 815

**GROUND FLOOR**  
33.6 sq.m. approx.



**1ST FLOOR**  
165.7 sq.m. approx.



Whilst every attempt has been made to ensure the accuracy of the floorplan contained here, measurements of doors, windows, rooms and any other items are approximate and no responsibility is taken for any error, omission or mis-statement. This plan is for illustrative purposes only and should be used as such by any prospective purchaser. The services, systems and appliances shown have not been tested and no guarantee as to their operability or efficiency can be given. Made with Metropix ©2020

1/147 Smeaton Grange Rd, Smeaton Grange TOTAL FLOOR AREA : 199.3 sq.m. approx.