



52 Balmoral Rise WILTON NSW

4 2 6

Set into a backdrop of the beautiful Wilton countryside, tucked into the whisper-quiet streets, pleasant parks, and pristine neighbourhoods of Bingara Gorge, 52 Balmoral Rise offers a life of tranquillity, luxury, and regular golf sessions at the Bingara Gorge Golf Course!

Step beyond its tidy, landscaped gardens and you'll find yourself welcomed by the home's immaculately presented interior. A bright, comfortable atmosphere is created by plenty of natural light filtering through plantation shutters throughout, as well as ducted air conditioning, warm timber flooring, and an open plan core kitchen, dining, and family area. This spacious area is well positioned for frequent family interaction, and the stylish kitchen features stone-top benches, gas cooking, and a walk-in pantry.

Bedrooms are comfortably sized and spaced evenly throughout, each featuring built-in wardrobes, with the extra spacious master bedroom sporting a walk-in wardrobe and

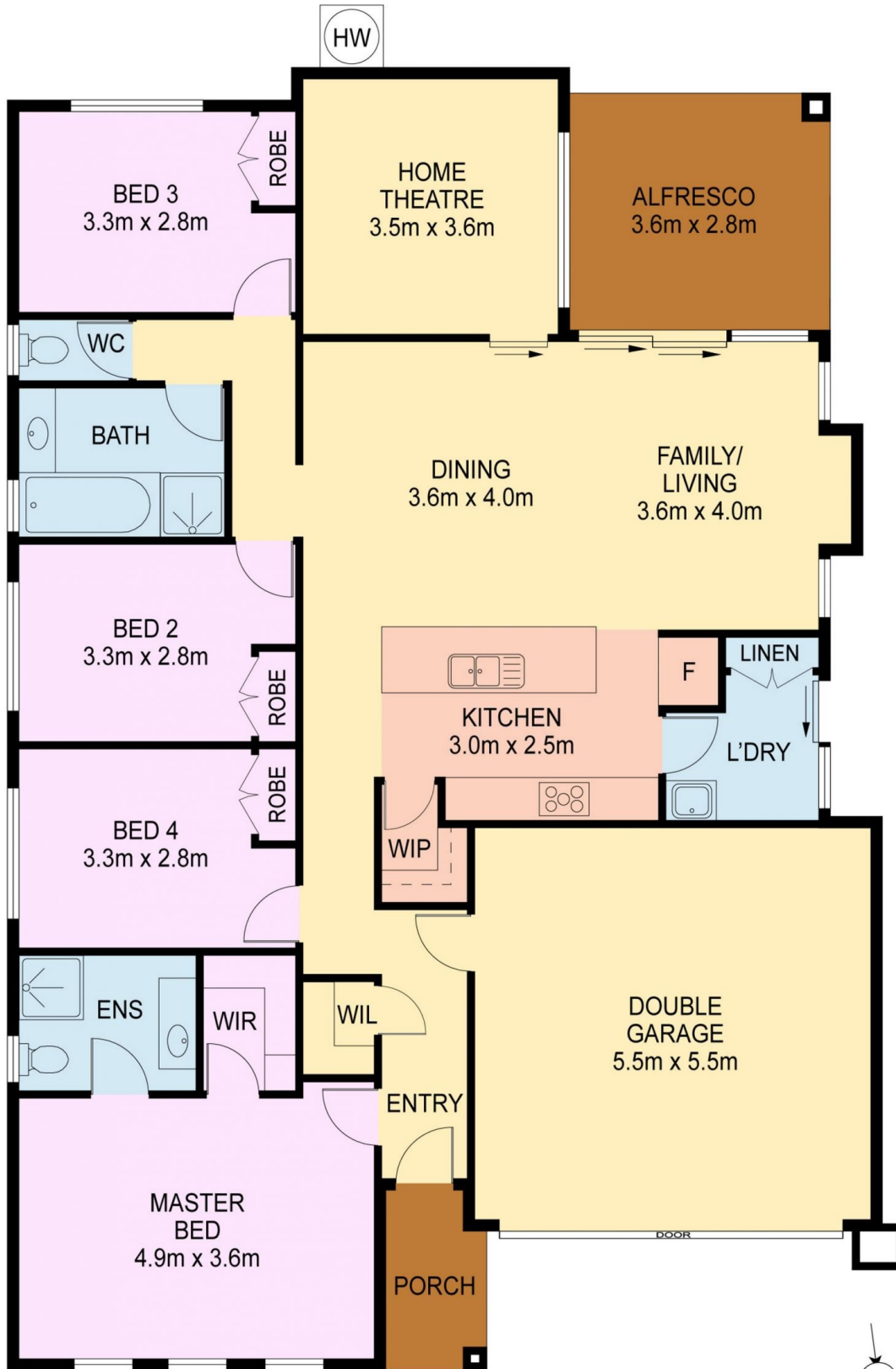
Price : Contact Agent
Land Size : 627 sqm
View : <https://www.macarthurunited.com.au/80294>
60



Lee Friend
0416 213 478



Nicole Friend



52 BALMORAL RISE, WILTON

Disclaimer: This Floor plan and/or site plan is an approximation for illustration purposes only.
 All measurements are approximate and not guaranteed to be exact or to scale
 Interested parties should confirm measurements by their own means

Internal Area: 174 sqm

SCALE

