



**8 Paraka Place BRADBURY NSW**

3 2 2

Situated in ever-popular Bradbury, sits this beautifully presented double brick home that offers you and your family a spacious home that provides warmth and comfort.

Featuring 3 good-side bedrooms (2 with BIR's), neat and tidy kitchen, dining area, 2 full bathrooms and dual living areas, this property has space for a family to enjoy.

Located on an impressive 806sqm block, this property is only a short drive to Macarthur Square, Campbelltown Hospital and Train Station. Have location as a convenience being surrounded by local shops, parks, and schools.

Additional features include:  
- Large shed

**Type** : House  
**Land Size** : 806 sqm  
**View** : <https://www.macarthurunited.com.au/8293544>

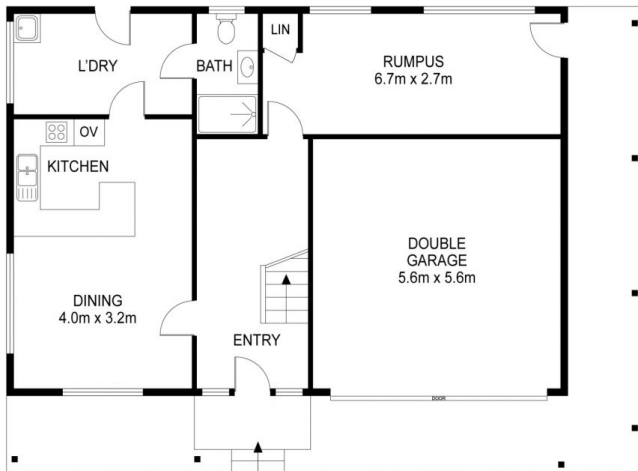


**Jake Alchin**  
0438 228 722

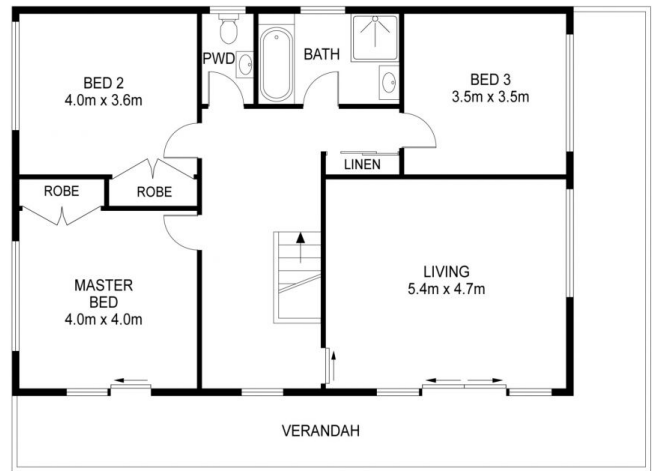


**Ryan Shumack**  
0426 984 815

[For full version visit the website](https://www.macarthurunited.com.au)



GROUND FLOOR



FIRST FLOOR



8 PARAKA PLACE, BRADBURY

Disclaimer: This Floor plan and/or site plan is an approximation for illustration purposes only.  
 All measurements are approximate and not guaranteed to be exact or to scale  
 Interested parties should confirm measurements by their own means



Internal Area: 206 sqm  
 SCALE  
 0 1 2 3 4m