



**27 Donalbain Circuit ROSEMEADOW NSW**

3 2 3

Positioned on a generous corner block in the growing suburb of Rosemeadow, 27 Donalbain Circuit offers a fantastic opportunity for families, tradies, or investors seeking space, flexibility, and added value.

This beautifully updated home features 3 well sized bedrooms, 1 bathroom with separate toilet in the laundry, and a single car garage perfectly suited for comfortable everyday living.

Inside, you'll find two separate living areas, providing plenty of room for the whole family to relax and unwind. The renovated kitchen is a standout, complete with stone bench tops, dishwasher, and ample storage. Comfort is ensured year round with multiple split system air conditioning units,

[For full version visit the website](https://www.macarthurunited.com.au)

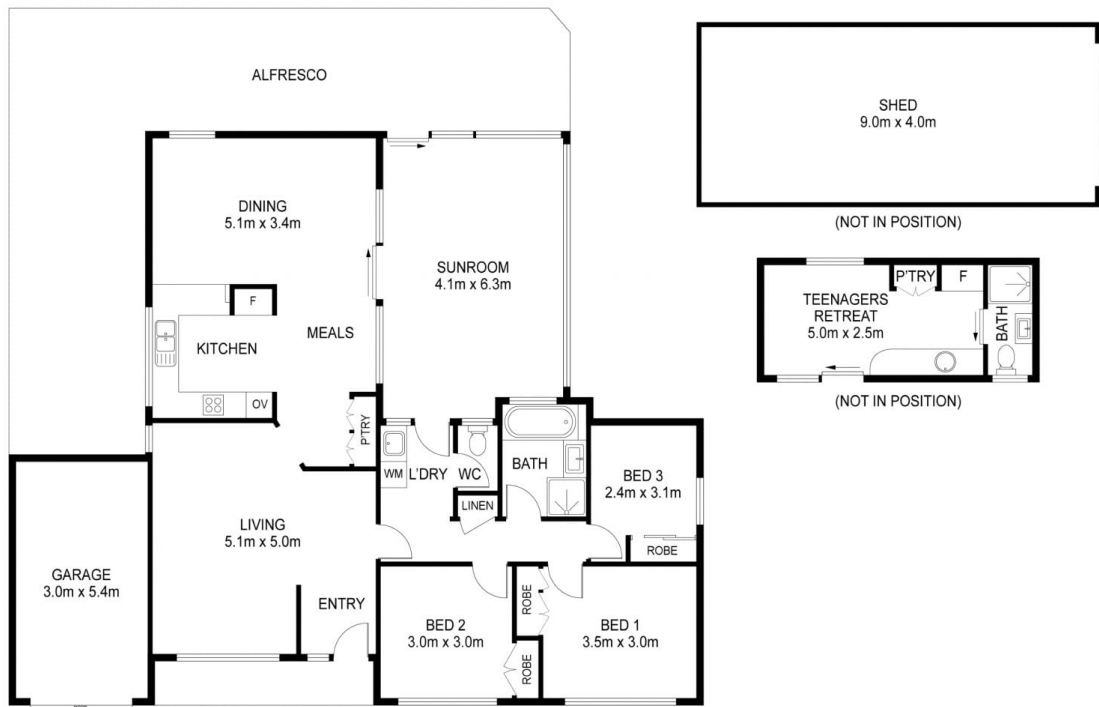
**Type** : House  
**Price** : Expression Of Interest  
**Land Size** : 691 sqm  
**View** : <https://www.macarthurunited.com.au/86844>  
 23



**Jonathan El-Tawil**  
0404394563



**Ryan Shumack**  
0426 984 815



**27 DONALBAIN CIRCUIT, ROSEMEADOW**

Disclaimer: This Floor plan and/or site plan is an approximation for illustration purposes only.  
 All measurements are approximate and not guaranteed to be exact or to scale  
 Interested parties should confirm measurements by their own means



Internal Area: 166 sqm  
 SCALE  
 0 1 2 3 4m